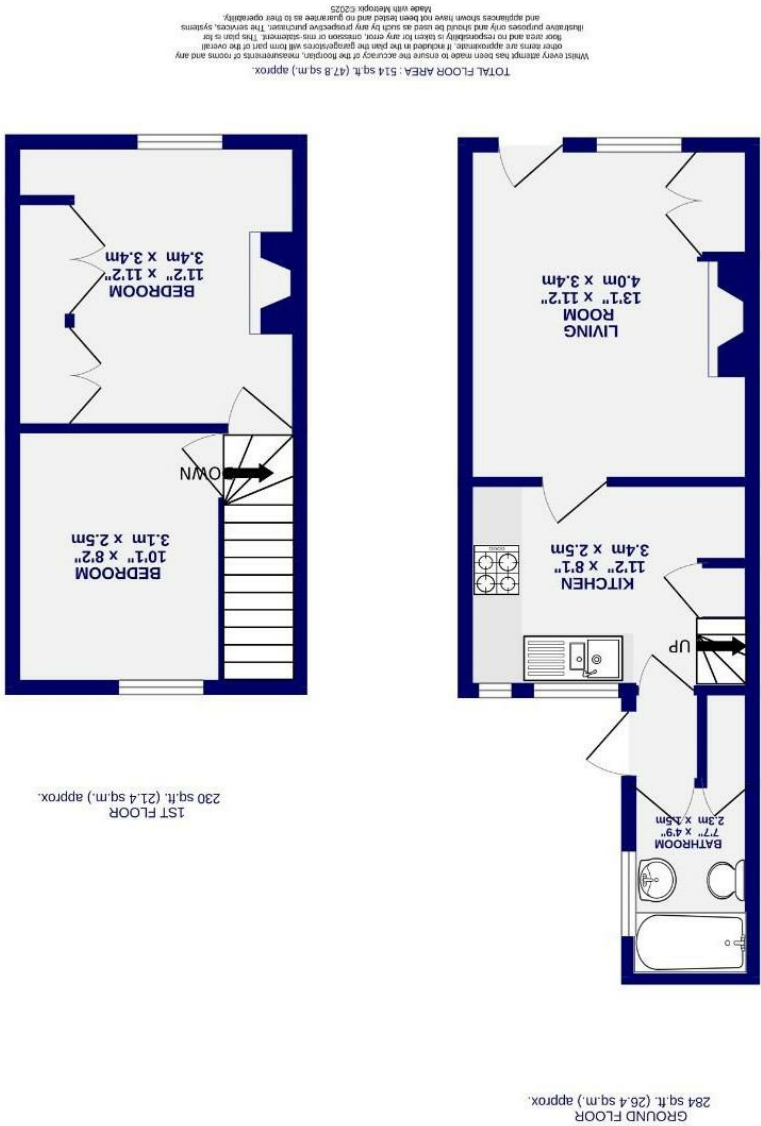




Falconer Street Holgate, York YO24 4JH

Freehold
Council Tax Band - A

- Period Victorian Terrace
- Two Double Bedrooms
- Well Maintained
- Ideal First Home
- Enclosed West Facing Courtyard
- Central Location
- No Onward Chain
- EPC D



These particulars have been prepared as accurately and as reliably as possible, but should not be relied upon as 'statement of fact'. If there is any point which is of particular importance to you, please contact the office and we would be pleased to check the information. We have not tested any services, appliances, equipment or facilities and nothing in these particulars should be deemed to be a statement that they are in good working order, or that the property is in good structural condition or otherwise. Any areas, measurements, floor plans or distances referred to are given as a guide only and are not precise. Purchasers must satisfy themselves by inspection or by otherwise regarding the items mentioned above and as to the correctness of each of the statements contained in these particulars. No person in the employment of Ashtons has any authority to make or give any representation or warranty whatsoever in relation to this property or these particulars nor enter into any contract relating to the property on behalf of the vendor.

Falconer Street
Holgate, York
YO24 4JH

£220,000

2 1

Located in the ever popular residential area of Holgate, just a short walk from York train station and the city centre, is this much loved period terrace home. With two double bedrooms, original features throughout, and a private west facing courtyard, the property is offered with no onward chain, making it an ideal first home or investment.

Internally, the home offers a generous living room full of charm, retaining period features such as original Victorian cupboards and drawers, picture rails, and a feature fireplace. To the rear is a well proportioned fitted kitchen, offering ample storage via a range of wall and base units, along with some integrated appliances.

Completing the ground floor is a three piece family bathroom.

Upstairs, there are two spacious double bedrooms. The larger bedroom includes built in storage and a feature fireplace.

Outside, the property benefits from a private west facing courtyard, low-maintenance and perfect for enjoying the afternoon sun.

Offered with no onward chain, early viewing is highly recommended.

Council Tax Band A

